

SPARE PARTS CATALOG

CLASSIC 60



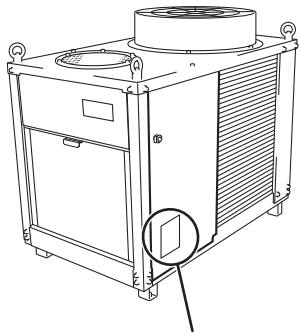
MOVINCOOL®
THE #1 SPOT COOLING SOLUTION

Table of Contents

No.	UNIT PART NUMBER	SERIAL NUMBER RANGE	REFRIGERANT	SECTION
1	GX484000-4101	0409XXXXC60 to Present (From April 2009 to Present)	R410A	Page 3 to 15 SP0032-03
	GX484000-4100			
2	484000-1132	1099XXXXC60 to 0309XXXXC60 (From October 1999 to March 2009)	R22	Page 17 to 27 SP0062-04
	484000-1131			

SERIAL NUMBER LOCATION AND IDENTIFICATION

Nameplate Label



Nameplate Label Position

COOLING AMPS. WITH PUMP	<input type="text"/>				
COMPR. OUTPUT	<input type="text"/>				
REFRIGERANT/TOTAL CHARGE	<input type="text"/>				
DESIGN PRESSURE LO/HI	<input type="text"/>				
PART NO./WEIGHT	<input type="text"/>				
SERIAL NO.	<table border="1"> <tbody> <tr> <td>▲▲</td> <td>□□</td> <td>XXXX</td> <td>###</td> </tr> </tbody> </table>	▲▲	□□	XXXX	###
▲▲	□□	XXXX	###		

Month
Year

Model
Sequential
Number

© 2017 DENSO PRODUCTS AND SERVICES AMERICAS, INC.

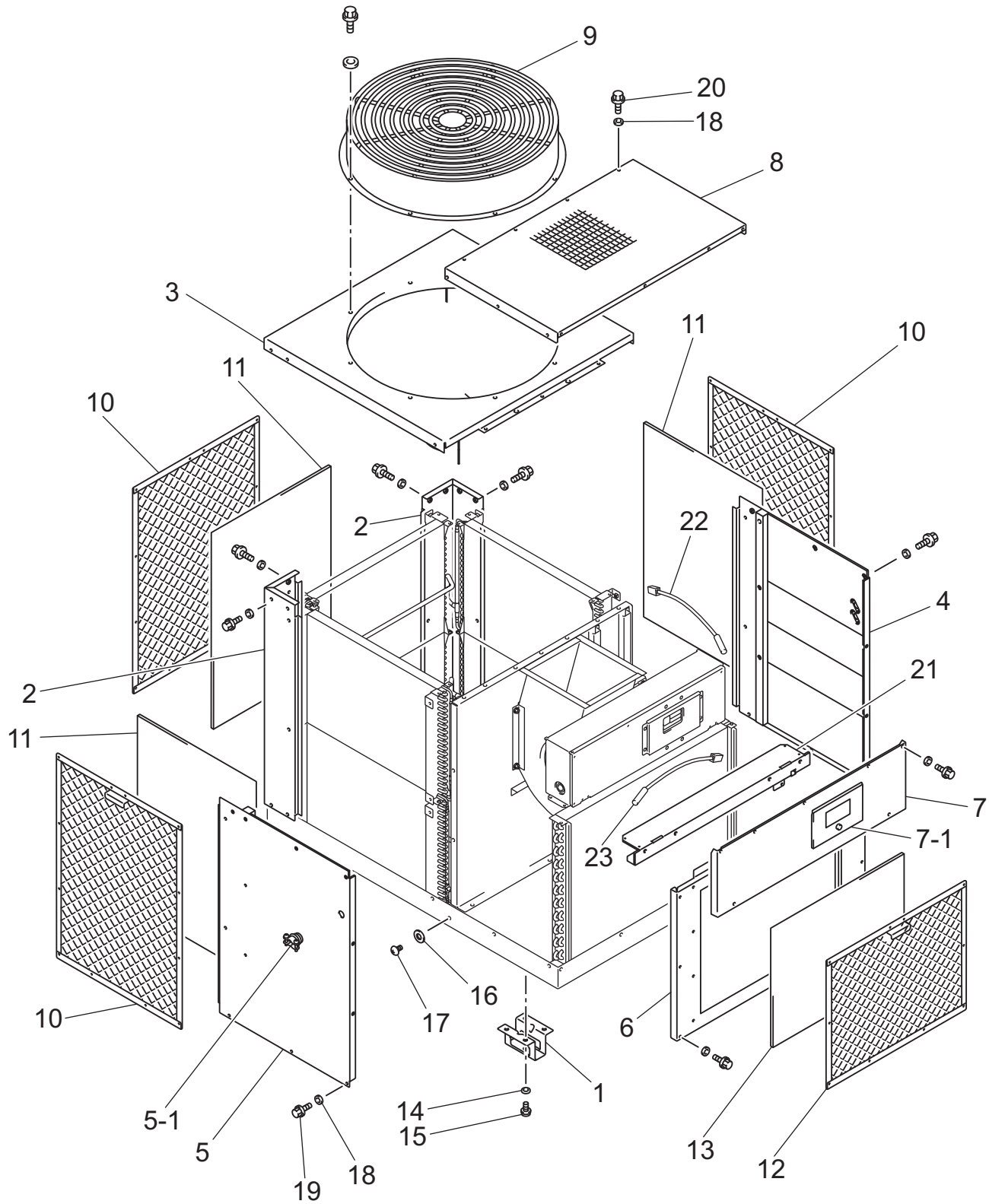
All rights reserved. This book may not be reproduced or copied, in whole or in part, without the written permission of the publisher. DENSO PRODUCTS AND SERVICES AMERICAS, INC. reserves the right to make changes without prior notice. MovinCool®, Office Pro® and SpotCool® are registered trademarks of DENSO Corporation.

CLASSIC 60

Unit Part No: GX484000-4101
GX484000-4100

Unit Serial Number Range:
0409XXXXC60 to Present
(From April 2009 to Present)

CLASSIC 60



CLASSIC 60

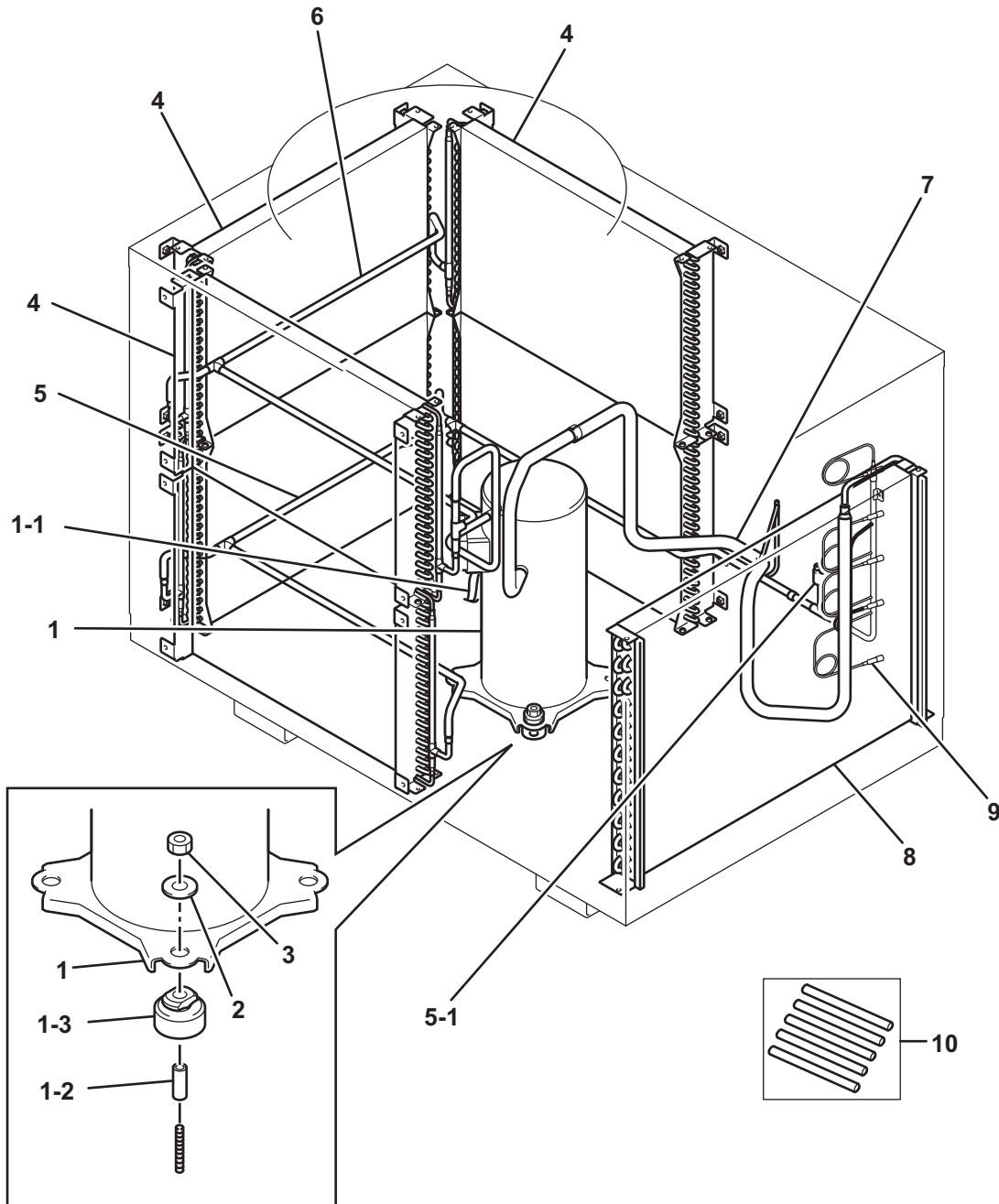
ILL. No.	DESCRIPTION	PART No.	QTY.	UNIT SERIAL No. RANGE*	REMARKS**
1	Spacer	484921-0072	4		
2	Panel Sub-Assy, Rear	GX484470-4540	2		
3	Cover Assy, Rear	GX484390-1290	1		
4	Panel Assy, Right	GX484410-9210	1		
5	Panel Assy, Left	GX484410-9190	1		w/ILL.No.5-1
5-1	Connector, Power Cord	GX484506-0310	1		
6	Panel Assy, Evaporator	GX484410-9200	1		
7	Panel Assy, Front	GX484410-9220	1		w/ILL.No.7-1
7-1	Cover, Controller	GX484390-1260	1		
8	Cover Assy, Front	GX484420-0600	1		
9	Duct Assy, Exhaust	GX484370-0160	1		
10	Frame, Condenser Filter	GX484300-3091	3		
11	Filter, Condenser	GX484401-1890	3		
12	Frame, Evaporator Filter	GX484300-3081	1		
13	Filter, Evaporator	484401-0871	1		
14	Washer, Toothed	949016-1030	16		
15	Bolt w/Washer	91470-10207	16		M10×1.25, L=20
16	Washer, Plate	90201-06400	1		For Ground
17	Screw	90051-06160	1		M6×1, L=12, For Ground
18	Washer, Toothed	949016-0120	84		
19	Bolt w/Washer	91570-06147	70		M6×1, L=14
20	Bolt w/Washer	91570-06357	14		M6×1, L=35
21	Bracket Sub-Assy	GX484320-0680	1		
22	Thermistor, Anti-Freeze Up	482780-1540	1		(FTS)
23	Thermistor, Room Temperature	482780-1550	1		(RTS)

*: Please refer to page number 2 for the position of the nameplate showing the serial number on the unit.

"Unit Serial Number Range*" column indicates the first four digits of the unit serial number.

** : Please refer to the Reference Table on page number 29 for more information on the remarks.

CLASSIC 60



CLASSIC 60

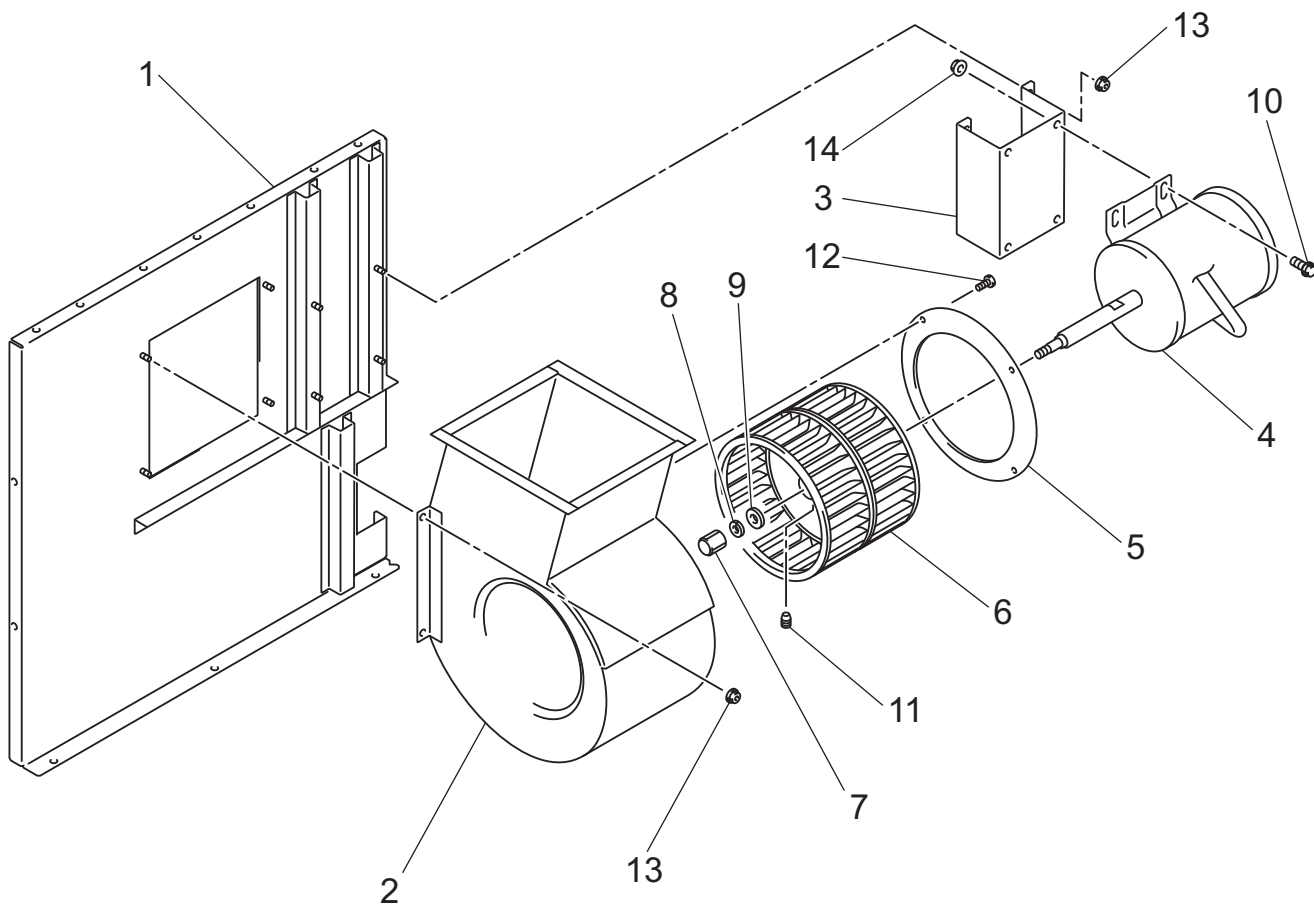
ILL. No.	DESCRIPTION	PART No.	QTY.	UNIT SERIAL No. RANGE*	REMARKS**
1	Compressor Assy	GX484650-3441	1	0417 to Present	Compressor Model No. ZP54K5E-TFD, w/ILL.No.1-1~1-3 Discharge & Suction Pipes
		GX484650-2961	1	0409 to 0317	Compressor Model No. ZP54K5E-TFD, w/ILL.No.1-1~1-3 Discharge & Suction Pipes
1-1	Wire Assy	GX481950-2990	1	0417 to Present	For Compressor Model No. ZP54K5E-TFD
		481950-0641	1	0409 to 0317	For Compressor Model No. ZP54K3E-TFD
1-2	Collar	LA484915-0280	4		
1-3	Cushion	LA484904-0220	4		
2	Washer, Steel Plate	949011-5330	4		
3	Nut	90190-08651	4		M8×1.25
4	Core Assy, Condenser	GX484600-2430	3		
5	Pipe Assy, Lower Circuit	GX484800-4860	1		w/ILL.No.5-1
5-1	High Pressure Switch Assy	GX484660-0550	1		(HPRS)
6	Pipe Assy, Upper Circuit	GX484800-4850	1		
7	Pipe Assy, Connecting	GX484800-4840	1		
8	Core Assy, Evaporator	GX484600-2450	1		
9	Distributor Assy	GX484620-0140	1		Capillary
10	Pipe Assy, Charging	484800-0440	1		5 Pieces Per Package

*: Please refer to page number 2 for the position of the nameplate showing the serial number on the unit.

"Unit Serial Number Range*" column indicates the first four digits of the unit serial number.

** : Please refer to the Reference Table on page number 29 for more information on the remarks.

CLASSIC 60



CLASSIC 60

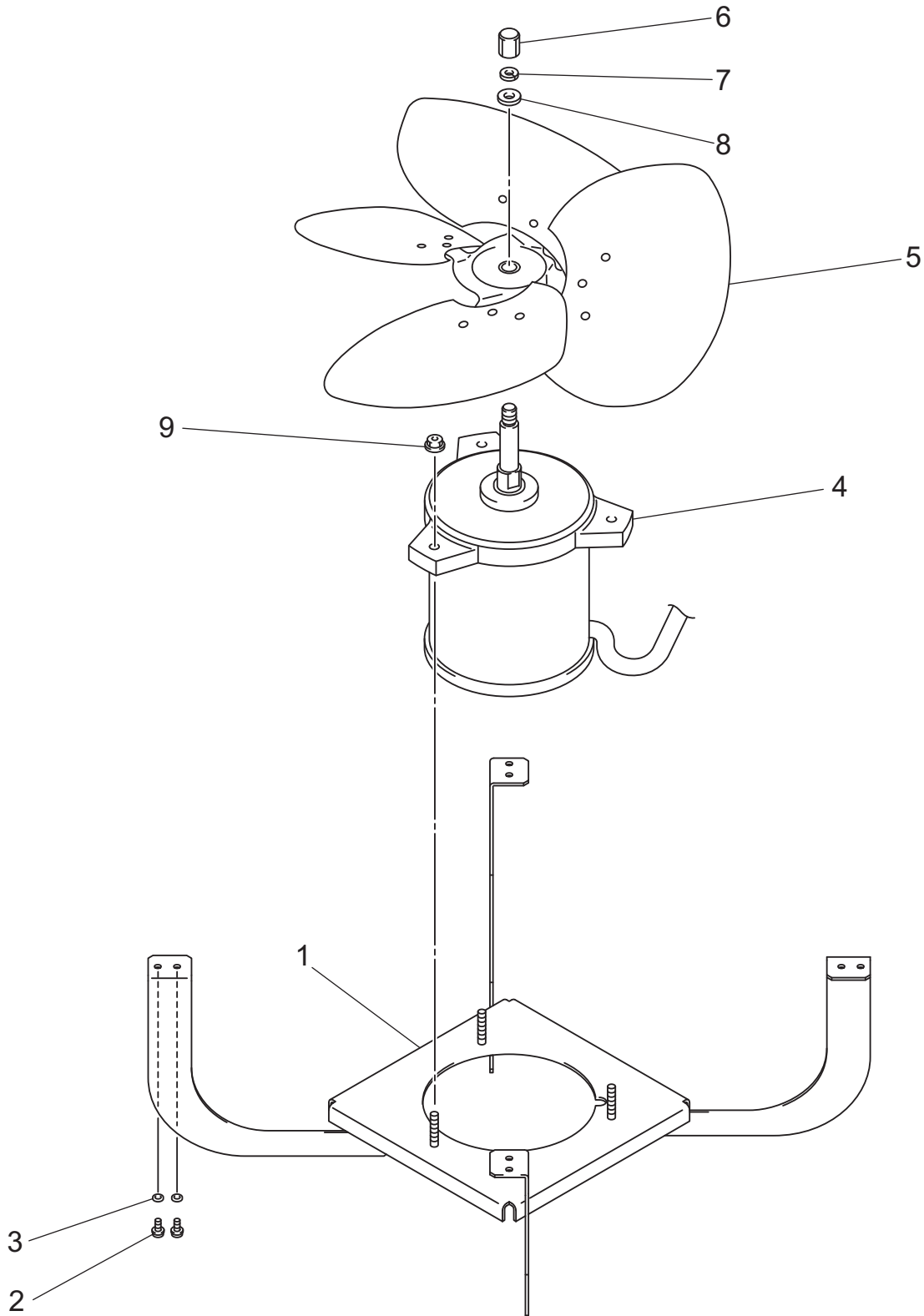
ILL. No.	DESCRIPTION	PART No.	QTY.	UNIT SERIAL No. RANGE*	REMARKS**
1	Frame Assy, Center	GX484300-3070	1		
2	Casing, Evaporator Fan	GX484260-0490	1		
3	Stay Assy	GX484330-0651	1		
4	Motor, Evaporator	484211-0851	1		
5	Ring	484381-0201	1		
6	Fan	484221-0340	1		
7	Nut, Bag	481216-0020	1		M12, For Left Screw
8	Washer, Wave	949017-1270	1		
9	Washer, Plate	90200-13001	1		
10	Bolt w/Washer	91478-10251	4		M10×1.25, L=25
11	Screw, Stop	949003-1440	1		M8
12	Screw	949006-3250	4		M4×0.7, L=10
13	Nut	92150-08081	8		M8×1.25
14	Nut	92150-10101	4		M10×1.25

*: Please refer to page number 2 for the position of the nameplate showing the serial number on the unit.

"Unit Serial Number Range*" column indicates the first four digits of the unit serial number.

** : Please refer to the Reference Table on page number 29 for more information on the remarks.

CLASSIC 60



CLASSIC 60

ILL. No.	DESCRIPTION	PART No.	QTY.	UNIT SERIAL No. RANGE*	REMARKS**
1	Stay Sub-Assy	484330-0390	1		
2	Bolt w/Washer	91570-06147	8		M6×1, L=14
3	Washer, Toothed	949016-0120	8		
4	Motor, Condenser	484211-0843	1		
5	Fan	484221-0080	1		
6	Nut, Bag	481216-0020	1		M12, For Left Screw
7	Washer, Steel Plate	949011-4010	1		
8	Washer, Wave	949017-1270	1		
9	Nut	92150-08081	3		M8×1.25

*: Please refer to page number 2 for the position of the nameplate showing the serial number on the unit.

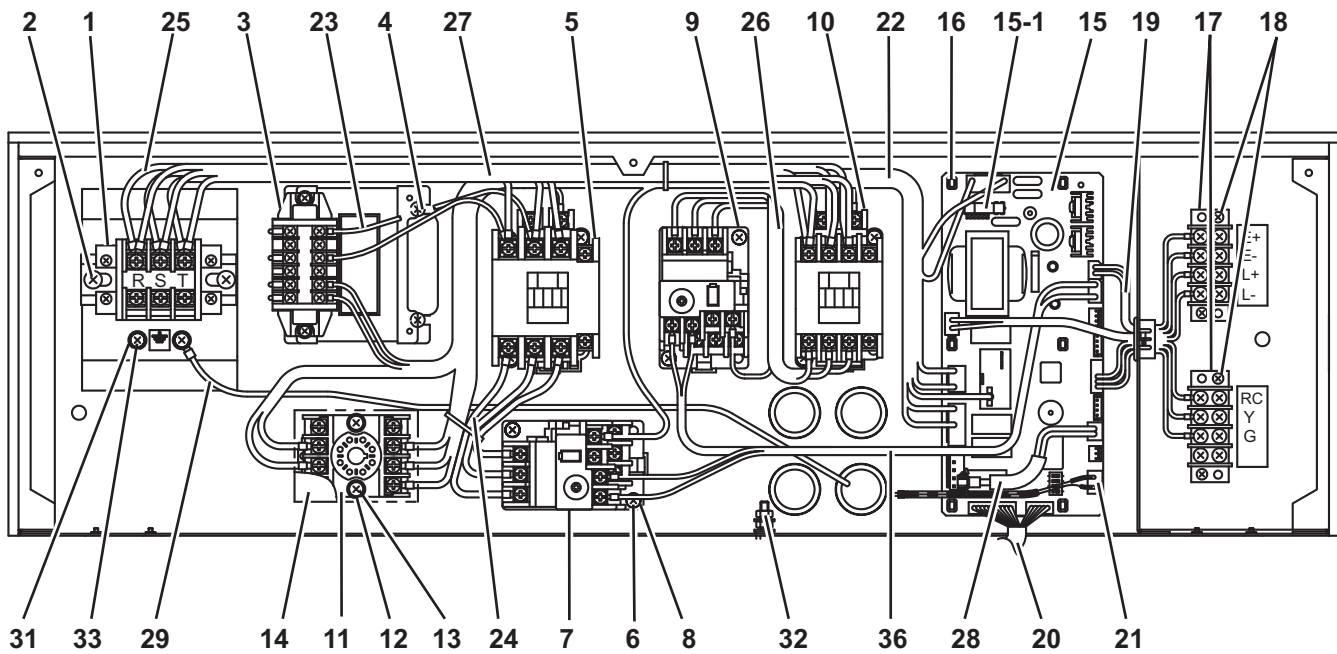
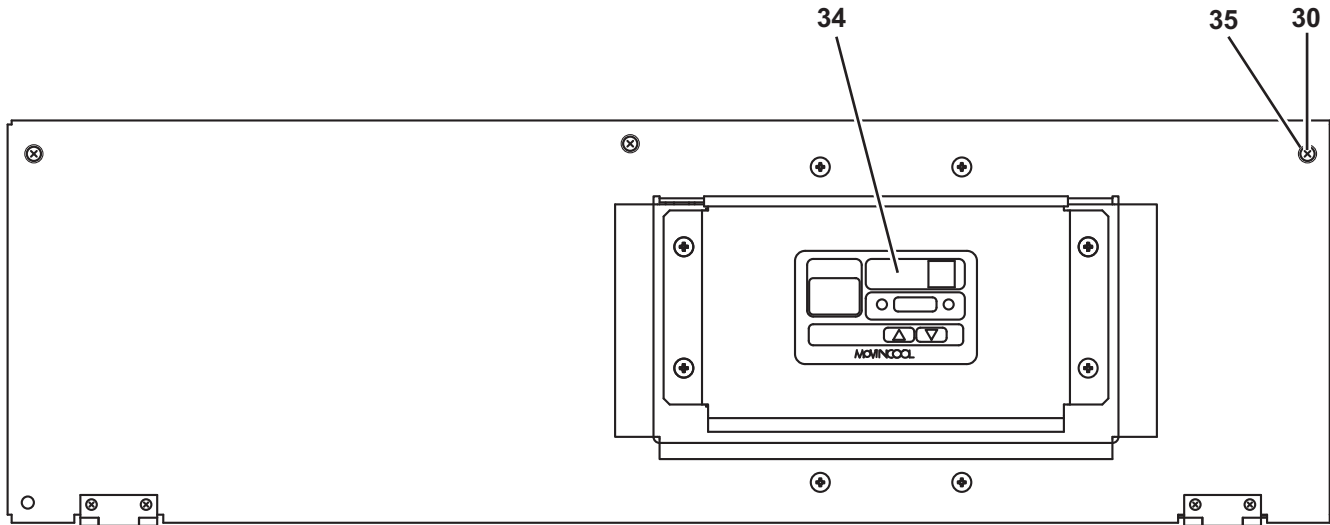
"Unit Serial Number Range*" column indicates the first four digits of the unit serial number.

** : Please refer to the Reference Table on page number 29 for more information on the remarks.

Unit Serial Number Range: 0409XXXXC60 to Present

CLASSIC 60

<For unit serial number from 0711XXXXC60 to Present>



ILL01036-00

CLASSIC 60

ILL. No.	DESCRIPTION	PART No.	QTY.	UNIT SERIAL No. RANGE*	REMARKS**
1	Terminal Block	484503-1350	1		(TB1), For Power Cord
2	Screw	949006-3230	2		M5×0.8, L=10
3	Transformer Assy	480819-0070	1		90VA (TNS)
4	Screw	949006-3250	5		M4×0.7, L=10
5	Relay, Compressor	GX484531-0920	1		(MCC)
6	Screw	949006-3280	10		M4×0.7, L=18
7	Overcurrent Relay, Condenser Fan	GX484505-0420	1		(OCF2)
8	Washer, Plate	90200-04001	8		
9	Relay, Fan Motor	GX484531-0930	1		(MCF), For Evaporator
10	Overcurrent Relay, Evaporator Fan	GX484505-0430	1		(OCF1)
11	Terminal Block	GX484503-0900	1		For Relay (RPHR)
12	Washer, Plate	90200-04331	2		
13	Bolt	480919-0740	2		M4×0.7, L=25
14	Relay, Reverse Phase Protector	GX484531-0880	1		(RPHR)
15	Controller Assy	484500-3710	1		(RB), w/ILL.No.15-1
15-1	Fuse	481936-0140	1		5A, 250V 5 Pieces Per Package
16	Support	482125-3170	6		
17	Terminal Block	GX484503-0840	2		For Input/Output Signal (TB2)
18	Screw	91310-03161	4		M3×0.5, L=16
19	Wire Assy	481950-0531	1		(RB)↔(TB2)
20	Wire Assy	481950-0561	1		(RB)↔Operation Panel
21	Wire Assy	481950-0600	1		(RB)↔(HPRS)
22	Wire Assy	481950-0663	1		(RB)↔(RPHR), (MCF), (OCF1), (TNS), (MCC)
23	Wire Assy	481950-0670	1		(MCC)↔(TNS)
24	Wire Assy	481950-0681	1		(MCC)↔(OCF2)
25	Wire Assy	481950-0690	1		(TB1)↔(MCC)
26	Wire Assy	481950-0701	1		(MCF)↔(OCF1)
27	Wire Assy	481950-0711	1		(TB1)↔(MCF)
28	Wire Assy	481950-0720	1		(RB)↔(RTS)
29	Wire Assy	484932-0482	1		For Ground
30	Washer, Toothed	949016-0230	6		For Screw w/Washer (ILL.No.35)
31	Washer, Plate	90201-04300	5		
32	Nut	91161-04320	2		M4×0.7
33	Screw	91051-04100	2		M4×0.7, L=10, For Ground
34	Switch Assy	GX484560-2130	1		Operation Panel & PCB
35	Screw w/Washer	91370-04107	3		M4×0.7, L=10
36	Wire Assy	481950-0542	1		(RB)↔(OCF1), (OCF2)

*: Please refer to page number 2 for the position of the nameplate showing the serial number on the unit.

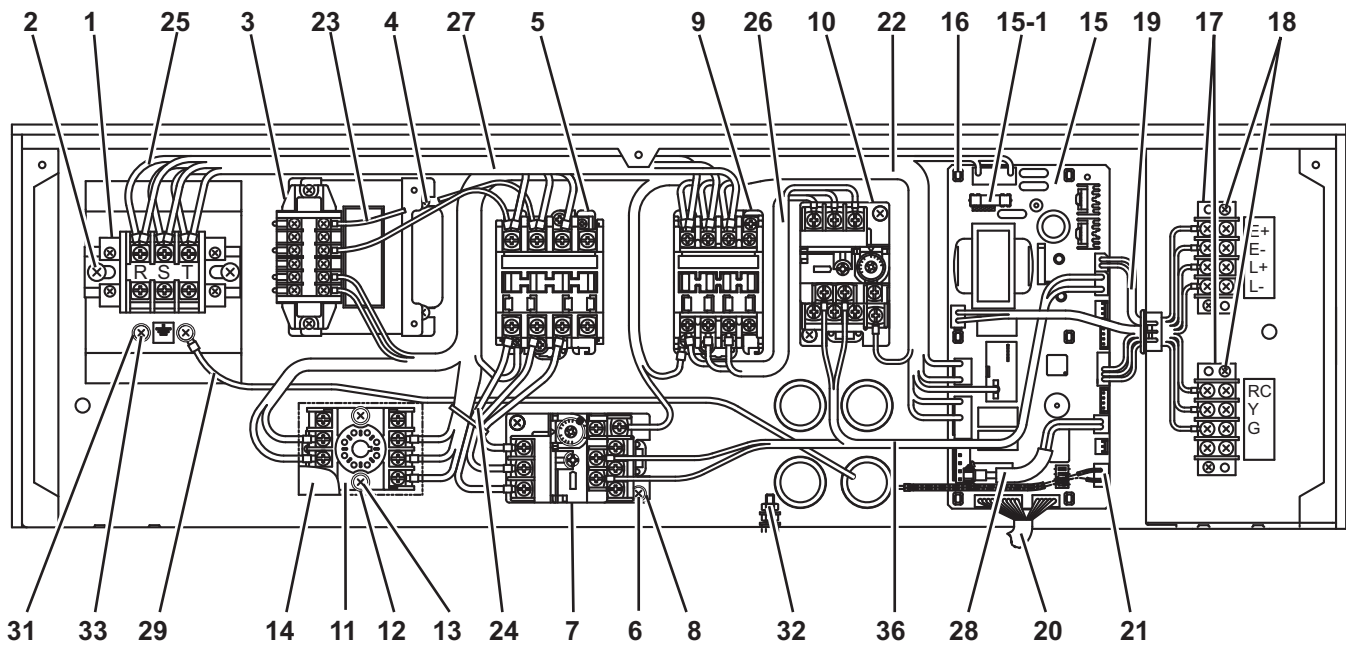
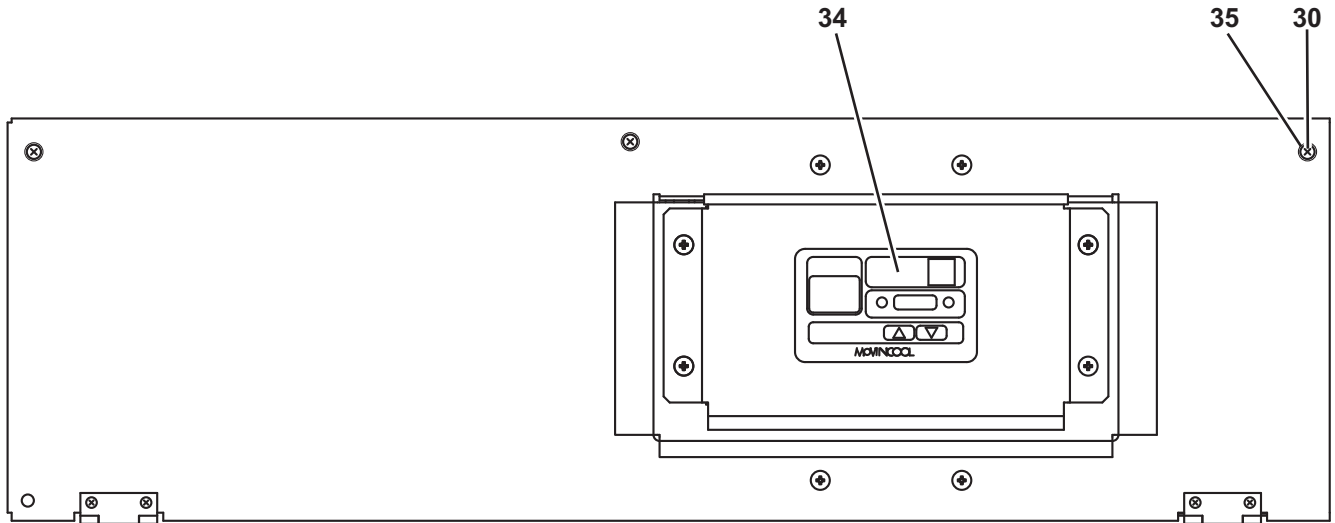
"Unit Serial Number Range*" column indicates the first four digits of the unit serial number.

** : Please refer to the Reference Table on page number 29 for more information on the remarks.

Unit Serial Number Range: 0409XXXXC60 to Present

CLASSIC 60

<For unit serial number from 0409XXXXC60 to 0611XXXXC60>



ILL00343-01

CLASSIC 60

ILL. No.	DESCRIPTION	PART No.	QTY.	UNIT SERIAL No. RANGE*	REMARKS**
1	Terminal Block	484503-1350	1		(TB1), For Power Cord
2	Screw	949006-3230	2		M5×0.8, L=10
3	Transformer Assy	480819-0070	1		90VA (TNS)
4	Screw	949006-3250	5		M4×0.7, L=10
5	Relay, Compressor	GX484531-0920	1		(MCC)
6	Screw	949006-3280	10		M4×0.7, L=18
7	Overcurrent Relay, Condenser Fan	GX484505-0420	1		(OCF2)
8	Washer, Plate	90200-04001	8		
9	Relay, Fan Motor	GX484531-0930	1		(MCF), For Evaporator
10	Overcurrent Relay, Evaporator Fan	GX484505-0430	1		(OCF1)
11	Terminal Block	GX484503-0900	1		For Relay (RPHR)
12	Washer, Plate	90200-04331	2		
13	Bolt	480919-0740	2		M4×0.7, L=25
14	Relay, Reverse Phase Protector	GX484531-0880	1		(RPHR)
15	Controller Assy	484500-3710	1		(RB), w/ILL.No.15-1
15-1	Fuse	481936-0140	1		5A, 250V 5 Pieces Per Package
16	Support	482125-3170	6		
17	Terminal Block	GX484503-0840	2		For Input/Output Signal (TB2)
18	Screw	91310-03161	4		M3×0.5, L=16
19	Wire Assy	481950-0531	1		(RB)↔(TB2)
20	Wire Assy	481950-0561	1		(RB)↔Operation Panel
21	Wire Assy	481950-0600	1		(RB)↔(HPRS)
22	Wire Assy	481950-0663	1		(RB)↔(RPHR), (MCF), (OCF1), (TNS), (MCC)
23	Wire Assy	481950-0670	1		(MCC)↔(TNS)
24	Wire Assy	481950-0681	1		(MCC)↔(OCF2)
25	Wire Assy	481950-0690	1		(TB1)↔(MCC)
26	Wire Assy	481950-0701	1		(MCF)↔(OCF1)
27	Wire Assy	481950-0711	1		(TB1)↔(MCF)
28	Wire Assy	481950-0720	1		(RB)↔(RTS)
29	Wire Assy	484932-0482	1		For Ground
30	Washer, Toothed	949016-0230	6		For Screw w/Washer (ILL.No.35)
31	Washer, Plate	90201-04300	5		
32	Nut	91161-04320	2		M4×0.7
33	Screw	91051-04100	2		M4×0.7, L=10, For Ground
34	Switch Assy	GX484560-2130	1		Operation Panel & PCB
35	Screw w/Washer	91370-04107	3		M4×0.7, L=10
36	Wire Assy	481950-0542	1		(RB)↔(OCF1), (OCF2)

*: Please refer to page number 2 for the position of the nameplate showing the serial number on the unit.

"Unit Serial Number Range*" column indicates the first four digits of the unit serial number.

** : Please refer to the Reference Table on page number 29 for more information on the remarks.

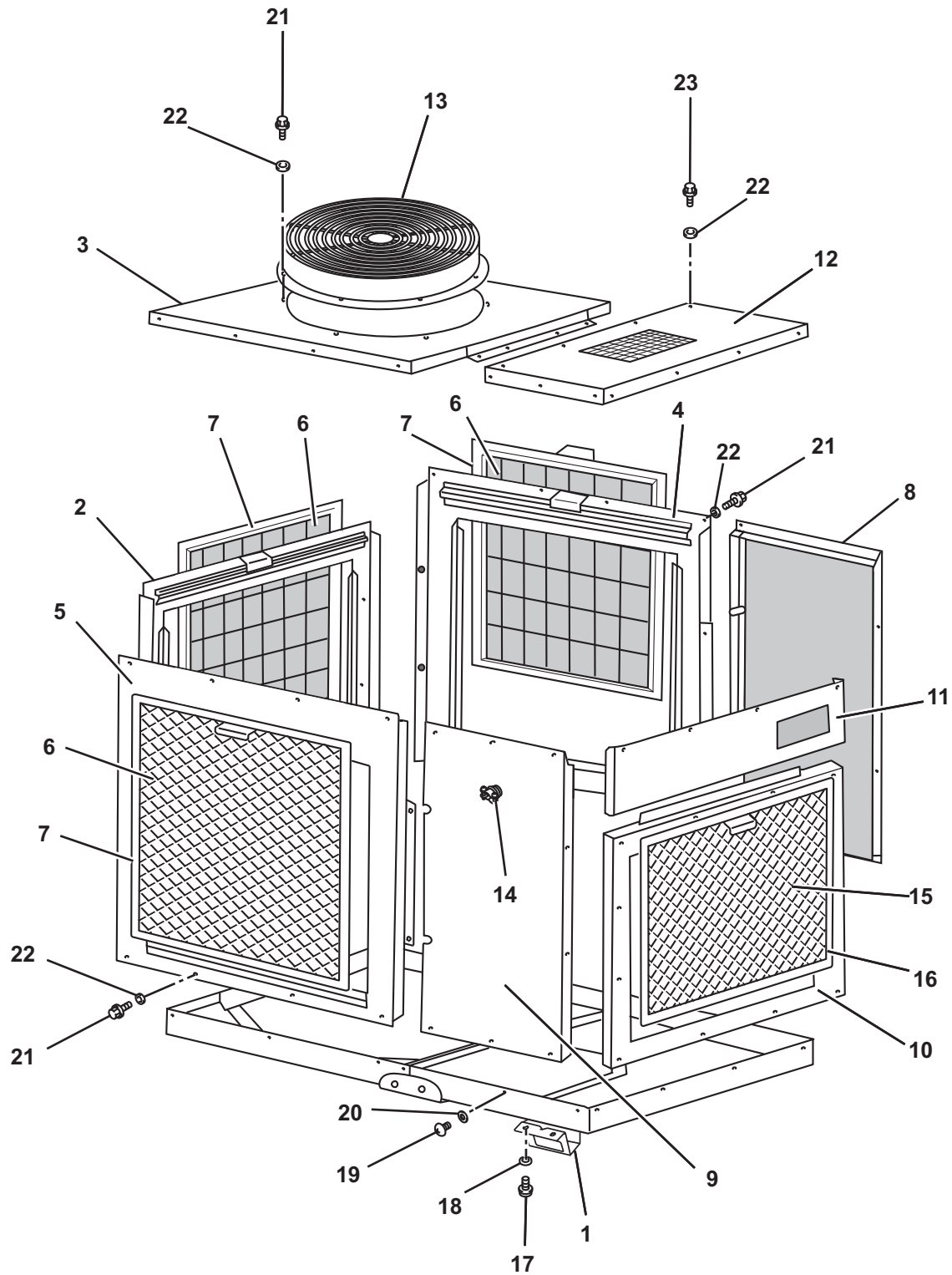
[Memo]

CLASSIC 60

Unit Part No: 484000-1132
484000-1131

Unit Serial Number Range:
1099XXXXC60 to 0309XXXXC60
(From October 1999 to March 2009)

CLASSIC 60



CLASSIC 60

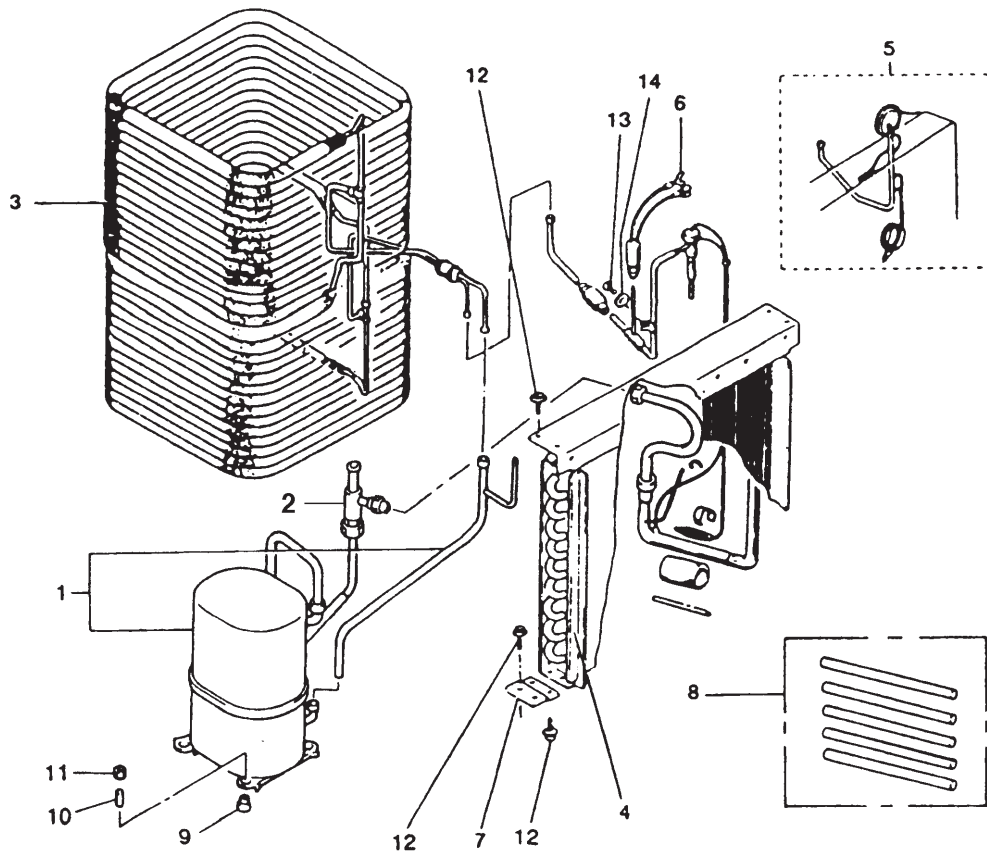
ILL. No.	DESCRIPTION	PART No.	QTY.	UNIT SERIAL No. RANGE*	REMARKS**
1	Leg	484921-0072	4		
2	Panel, Rear	484410-2861	1		
3	Panel, Condenser, Upper	484420-0160	1		
4	Panel, Condenser, Right	484410-2841	1		
5	Panel, Condenser, Left	484410-2851	1		
6	Filter, Condenser	484401-0861	3		
7	Frame, Condenser Filter	484300-0210	3		
8	Panel, Right	484410-2870	1		
9	Panel, Left	484410-2880	1		w/ILL.No.14
10	Panel, Evaporator	484410-2890	1		
11	Panel, Front	484410-2900	1		
12	Panel, Evaporator, Upper	484420-0170	1		
13	Grille, Exhaust	484370-0030	1		
14	Conduit	479748-0020	1		
15	Filter, Evaporator	484401-0871	1		
16	Frame, Evaporator Filter	484300-0220	1		
17	Bolt, w/Washer	91470-10207	16		M10, L20
18	Washer, Toothed	949016-1030	16		M10
19	Screw	90051-06160	1		M6, L16
20	Washer, Plate	90201-06400	1		
21	Bolt, w/Washer	91570-06147	69		M6, L14
22	Washer, Toothed	949016-0120	81		M6
23	Bolt, w/Washer	91570-06357	12		M6, L35

*: Please refer to page number 2 for the position of the nameplate showing the serial number on the unit.

"Unit Serial Number Range*" column indicates the first four digits of the unit serial number.

** : Please refer to the Reference Table on page number 29 for more information on the remarks.

CLASSIC 60



CLASSIC 60

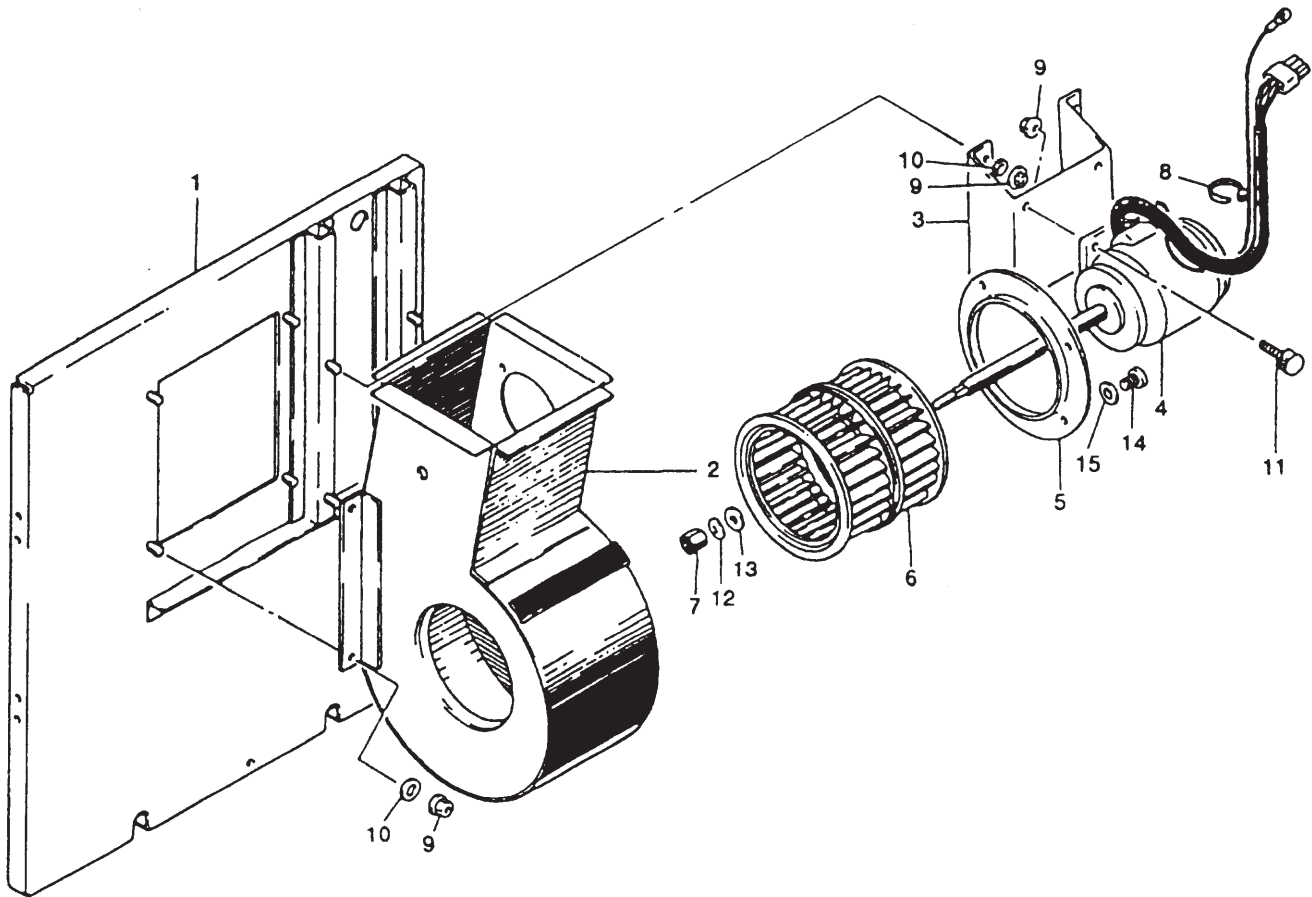
ILL. No.	DESCRIPTION	PART No.	QTY.	UNIT SERIAL No. RANGE*	REMARKS**
1	Compressor Assy	484650-0930	1		
2	Pressure Regulator	484782-0050	1		
3	Core Assy, Condenser	484600-0900	1		
4	Core Assy, Evaporator	484600-0910	1		w/ILL.No.6
5	Pipe Assy, Capillary	484640-0150	1		
6	High Pressure Switch	484660-0272	1		
7	Bracket	484321-0400	2		
8	Pipe, Charging	484800-0440	1		For Charging, 5 Pieces Per Package
9	Cushion	484904-0170	4		
10	Collar	484915-0230	4		
11	Nut, Hexagon	90190-08651	4		M8, Hex.Size 12
12	Bolt, w/Washer	91570-06147	6		M6, L14
13	Screw	91051-04100	1		M4, L10
14	Washer, Plate	90201-04300	1		

*: Please refer to page number 2 for the position of the nameplate showing the serial number on the unit.

"Unit Serial Number Range*" column indicates the first four digits of the unit serial number.

** : Please refer to the Reference Table on page number 29 for more information on the remarks.

CLASSIC 60



CLASSIC 60

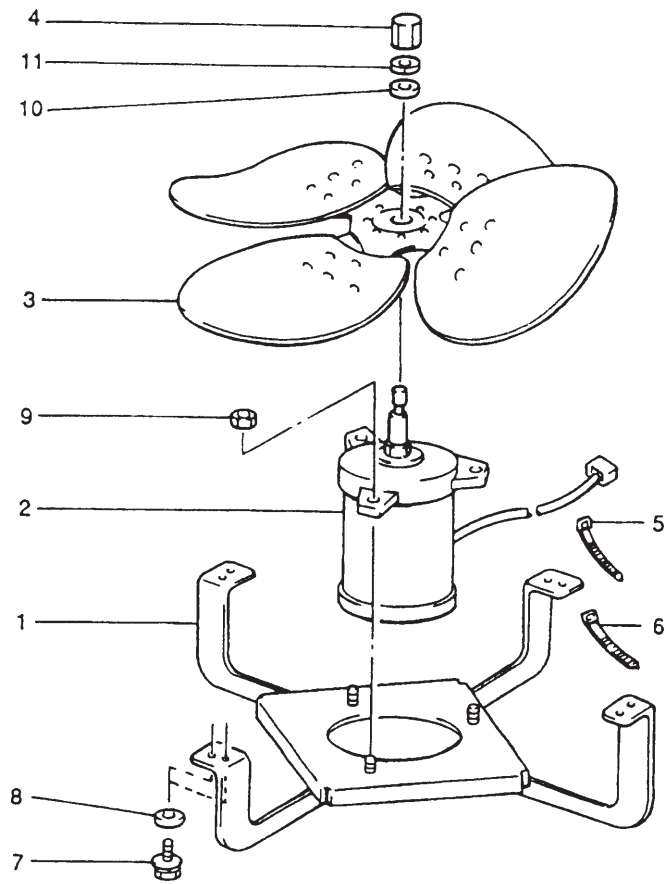
ILL. No.	DESCRIPTION	PART No.	QTY.	UNIT SERIAL No. RANGE*	REMARKS**
1	Frame	484300-0880	1		
2	Casing, Evaporator Fan	484260-0210	1		
3	Stay	484330-0401	1		
4	Motor	484211-0851	1		
5	Ring	484381-0201	1		
6	Fan	484221-0340	1		
7	Nut, Bag	481216-0020	1		Hex.Size 19
8	Band	949821-0030	2		L100
9	Nut, Flange	92150-08081	12		Hex.Size 12, M8
10	Washer, Toothed	949016-0320	8		M8
11	Bolt, w/Washer	91478-10251	4		M8, L25, Hex.Size 12
12	Washer, Spring	949017-1270	1		T1.2
13	Washer, Plate	90200-13001	1		M13
14	Screw	949006-3250	4		M4, L10
15	Washer, Toothed	949016-0230	4		M4

*: Please refer to page number 2 for the position of the nameplate showing the serial number on the unit.

"Unit Serial Number Range*" column indicates the first four digits of the unit serial number.

** : Please refer to the Reference Table on page number 29 for more information on the remarks.

CLASSIC 60



CLASSIC 60

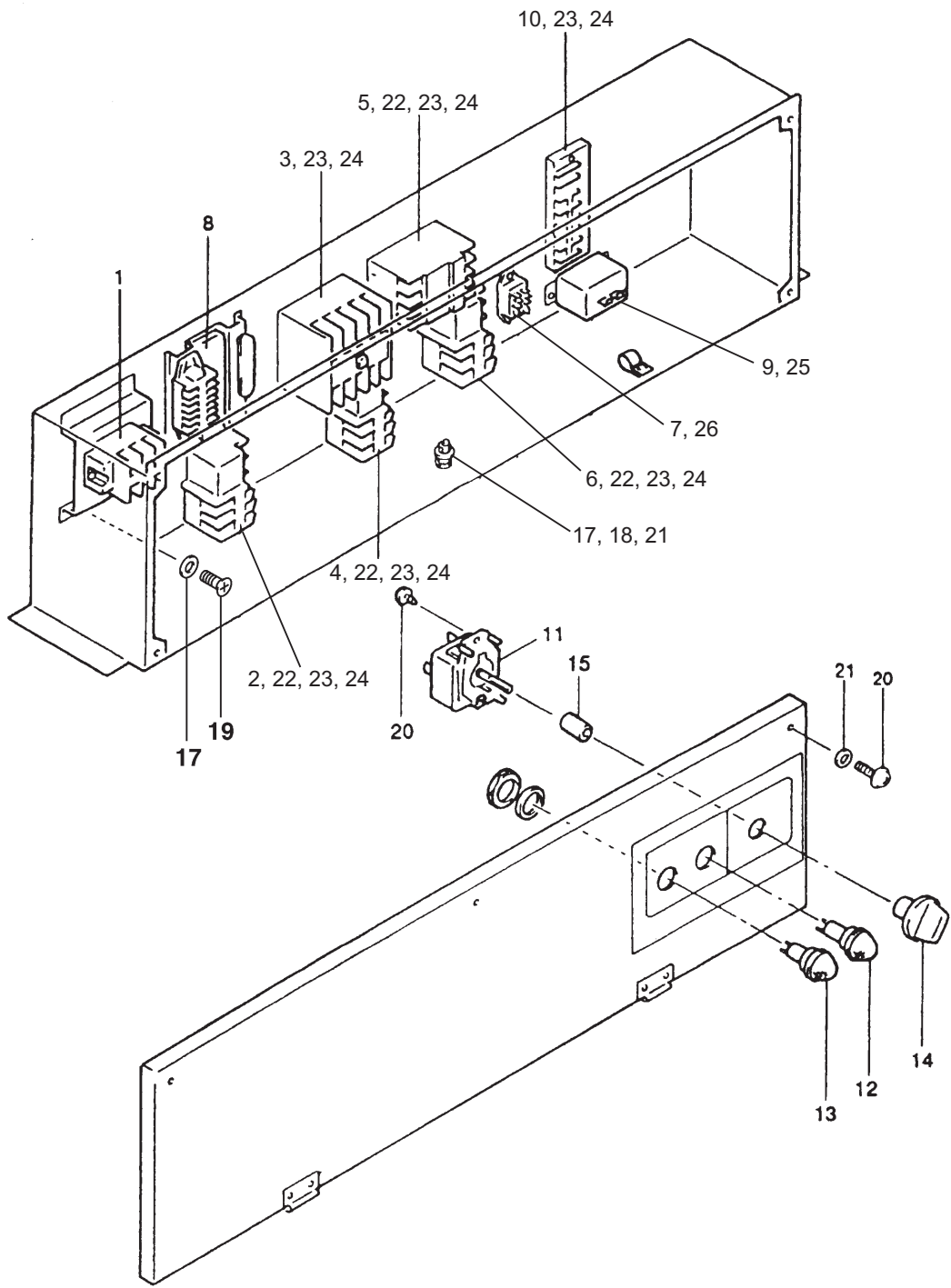
ILL. No.	DESCRIPTION	PART No.	QTY.	UNIT SERIAL No. RANGE*	REMARKS**
1	Bracket, Motor	484330-0390	1		
2	Motor	484211-0843	1		
3	Fan	484221-0080	1		
4	Nut, Special	481216-0020	1		Hex.Size 19
5	Band	949821-0030	1		L100
6	Clip, Middle	481951-0020	3		L150
7	Screw, w/Washer	91570-06147	8		M6, L14
8	Washer, Toothed	949016-0120	8		M6
9	Nut, Flange	92150-08081	3		M8, Hex.Size 12
10	Washer, Plate	949011-4010	1		
11	Washer, Spring	949017-1270	1		

*: Please refer to page number 2 for the position of the nameplate showing the serial number on the unit.

"Unit Serial Number Range*" column indicates the first four digits of the unit serial number.

** : Please refer to the Reference Table on page number 29 for more information on the remarks.

CLASSIC 60



CLASSIC 60

ILL. No.	DESCRIPTION	PART No.	QTY.	UNIT SERIAL No. RANGE*	REMARKS**
1	Terminal Block	484503-0260	1		(TB1), For Power Cord
2	Overcurrent Relay, Compressor	484505-0300	1	1099 to 1007	
		484505-0390	1	1107 to 0309	
3	Relay, Compressor	484531-0180	1	1099 to 1007	
		484531-0850	1	1107 to 0309	
4	Overcurrent Relay, Condenser Fan	484505-0230	1	1099 to 1007	
		484505-0400	1	1107 to 0309	
5	Relay, Fan Motor	484531-0350	1		
6	Overcurrent Relay, Evaporator Fan	484505-0270	1	1099 to 1007	
		484505-0410	1	1107 to 0309	
7	Relay, Auxiliary	484531-0170	1		
8	Transformer	480819-0070	1		
9	Thermostat	484504-0260	1		
10	Terminal Block	484503-0051	1		(TB2), For Branch Circuit
11	Switch Assy	484560-1760	1	1099 to 0505	
		484560-1740	1	0605 to 0309	
12	Red Lamp	484933-0120	1		
13	Clear Lamp	484933-0110	1		
14	Knob, Control Switch	484923-0150	1		
15	Clip	484917-0131	1		
16	Cap, Insulating	484922-0140	1		
17	Washer, Plate	90201-04300	4		
18	Nut, Hexagon	91161-04320	2		M4
19	Screw, Crossrecess Pan	91051-04100	2		M4, L10
20	Screw, w/Washer	91370-04087	5		M4, L8
21	Washer, Toothed	949016-0230	6		M4
22	Washer, Plate	90200-04001	8		
23	Screw	949006-3250	5		M4, L10
24	Screw	949006-3280	12		M4, L18
25	Bolt, w/Washer	949047-0220	2		M4, L8, Hex.Size 7
26	Screw	949006-4440	2		M3, L8

*: Please refer to page number 2 for the position of the nameplate showing the serial number on the unit.

"Unit Serial Number Range*" column indicates the first four digits of the unit serial number.

** : Please refer to the Reference Table on page number 29 for more information on the remarks.

[Memo]

Reference Table:

FTS	Freeze Protection Thermistor	OCF2	Overcurrent Relay MF2
HPRS	High Pressure Switch	RB	Relay Board
MCC	Compressor Motor Relay	RPHR	Reverse Phase Protector
MCF	Fan Motor Relay	RTS	Room Thermistor
MF1	Evaporator Fan Motor	TB1	Terminal Block
MF2	Condenser Fan Motor	TB2	Terminal Block
OCF1	Overcurrent Relay MF1	TNS	Transformer

DENSO

DENSO PRODUCTS AND SERVICES AMERICAS, INC.

Long Beach, CA 90810
www.movincool.com

Third Issue: April 2017